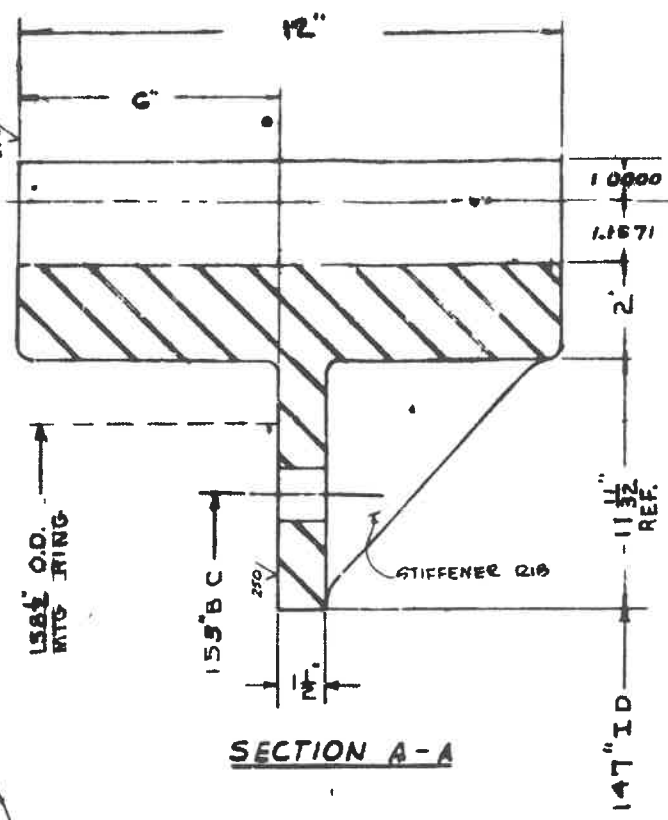


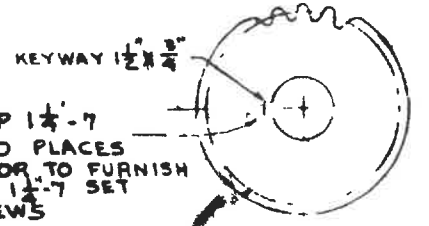
RING GEAR DETAIL

TAG NO. 104KJ-2
 TOOTH 176" P.D. 12" FACE 20° FULL
 INVOLUTE RING GEAR (SEE GEAR
 SPEC. SHEET) USE HI-TENSILE BOLTS
 MATERIAL - GR. 90-60 CAST STEEL OR EQ.
 TENSILE STRENGTH - 90,000 PSI
 COMPRESSIVE STRENGTH - 90,000 PSI
 SHEAR STRENGTH - 70,000 PSI
 MODULUS OF ELASTICITY - 30,000,000 PSI
 YIELD POINT - 70,000 PSI
 BRINELL HARDNESS - 250



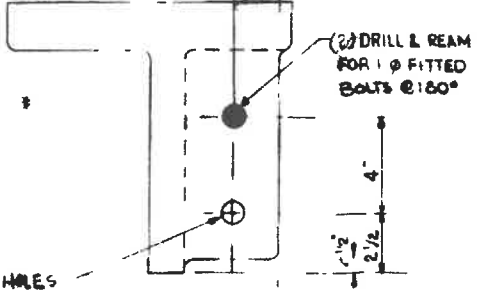
SECTION A-A

1/2 DIA. PILOT HOLES
 11 REQ'D EACH HALF
 SPACED AS SHOWN
 4 TYP
 SPLIT LINE
 4 TYP
 STIFFENER RIB
 SEE SECTION A-A
 20 PLACES
 1/4" HOLE 4 REQ'D
 EACH HALF SPACED
 AS SHOWN



PINION DETAIL

TAG NO. 104KJ-5
 24 TOOTH 2.40" P.D. 1.5" FACE
 20° FULL DEPTH INVOLUTE (SEE
 PINION SPEC. SHEET)
 MATERIAL -
 SAE 52100 CASE HARDENED
 TENSILE STRENGTH - 150,000 PSI
 COMPRESSIVE STRENGTH - 150,000 PSI
 SHEAR STRENGTH - 100,000 PSI
 MODULUS OF ELASTICITY - 30,000,000 PSI
 YIELD POINT - 110,000 PSI
 BRINELL HARDNESS - 350



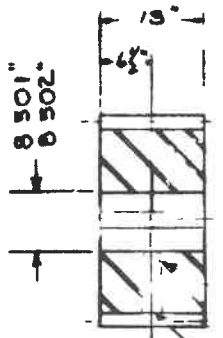
SECTION B-B

INSCRIBE PITCH LINE ON GEAR

PITCH LINE

176" P.D.

147" I.D.



TAP 1 1/4" X 7/16" DEEP
 2 PLACES
 LOCATE BETWEEN TEETH - END UP
 TO FURNISH SET SCREWS
 COUNTERBORE 1 1/2" DIA.
 TWO PLACES

GENERAL NOTES

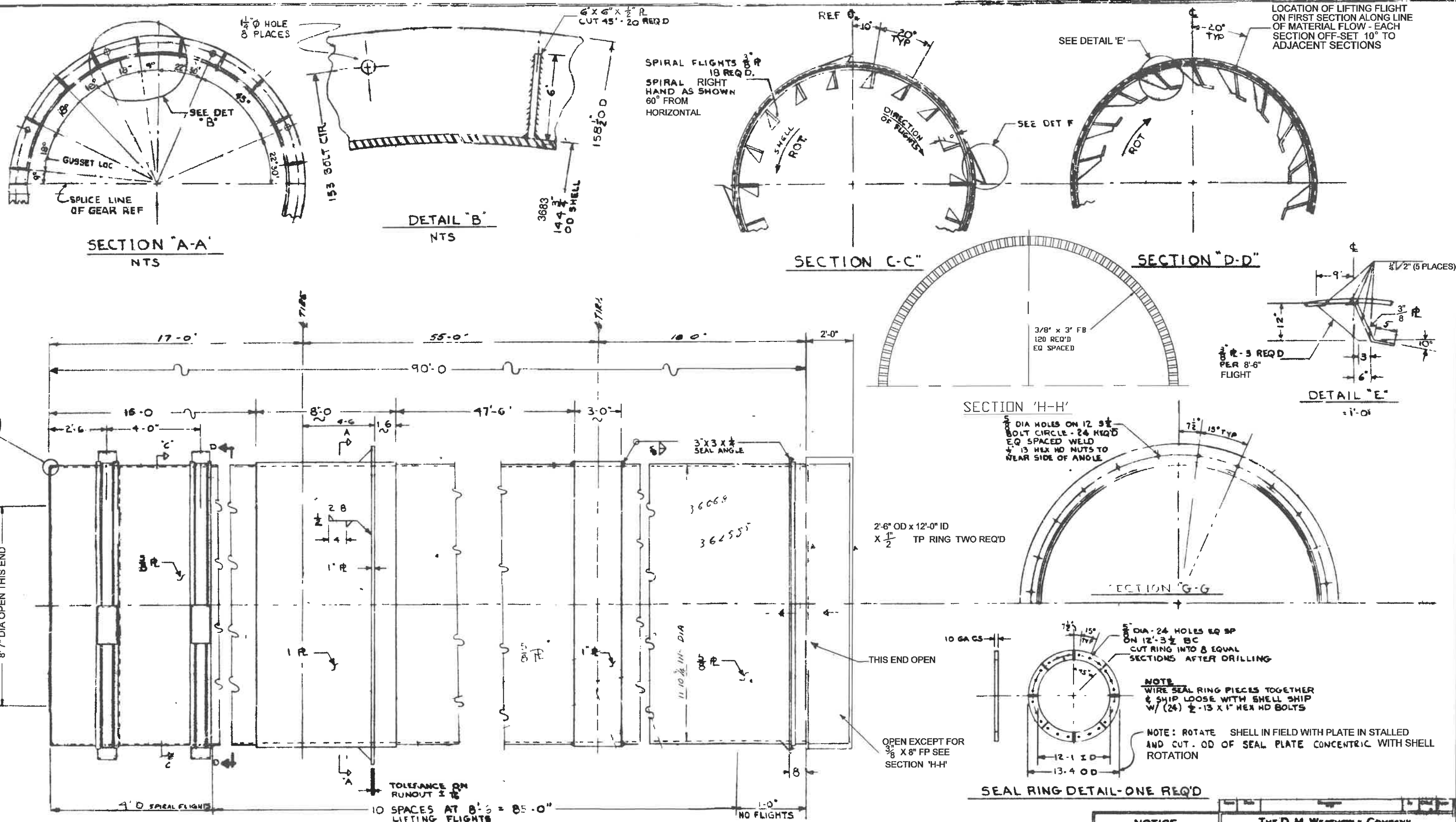
RING GEAR SPECIFICATIONS

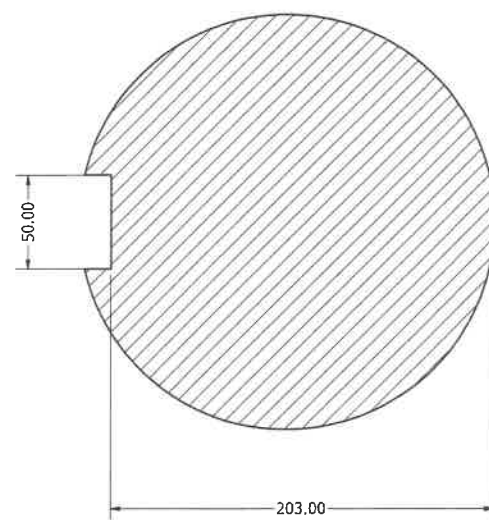
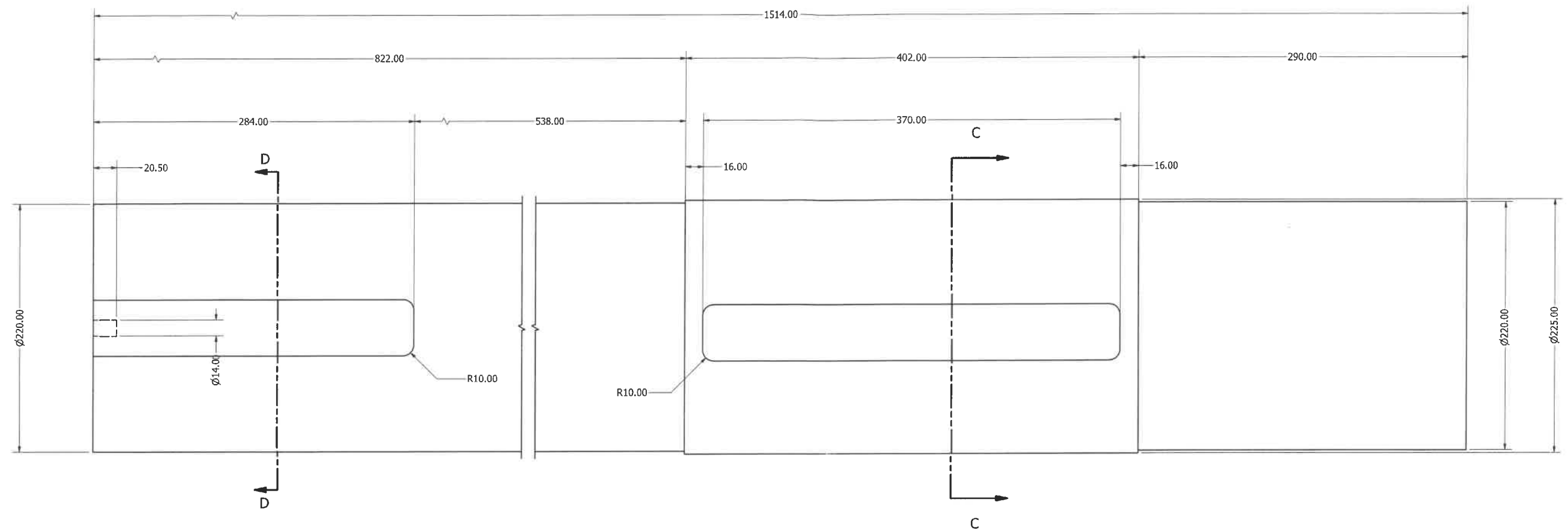
PRESSURE ANGLE	20°
FACE WIDTH	12"
NO. OF TEETH	176
DIAMETRAL PITCH	1
EQUIVALENT C.P.	3.1416
PITCH DIAMETER	176.0
OUTSIDE DIAMETER	178.0
ADDENDUM	1.0000
DEDENDUM	1.1571
WHOLE DEPTH OF TOOTH	2.1571
TOOTH THICKNESS AT PITCH LINE	1.5708
CLEARANCE	0.1571

PINION SPECIFICATIONS

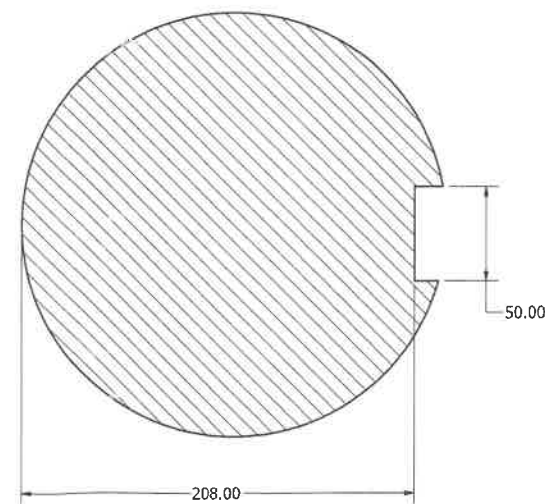
PRESSURE ANGLE	20°
FACE WIDTH	1.5"
NO. OF TEETH	24
DIAMETRAL PITCH	1
EQUIVALENT C.P.	3.1416
PITCH DIAMETER	2.40
OUTSIDE DIAMETER	2.60
ADDENDUM	1.0000
DEDENDUM	1.1571
WHOLE DEPTH OF TOOTH	2.1571
TOOTH THICKNESS	1.5708
CLEARANCE	0.1571

IMPORTANT CHECK FOR COMPLIANCE OF THIS DRAWING TO THE LATEST REV. OF THE SPECIFICATION SHEET APPROXIMATELY DATED AND DATED.		THE D. M. WEATHERLY COMPANY INDUSTRIAL ENGINEERS & DESIGNERS ATLANTA, GA.	
APPROVED FOR CONSTRUCTION BY: _____ DATE: _____		DR. F. - 3 P. - JUNE - COOLEY GEAR & P. - 176" P.D. TRICORP FERT. - 176" P.D. FERT. - 176" P.D. - 176" P.D.	
THIS DRAWING IS THE PROPERTY OF THE D. M. WEATHERLY COMPANY. IT IS TO BE USED FOR THE PROJECT ONLY. IT IS NOT TO BE REPRODUCED OR COPIED IN ANY MANNER WITHOUT THE WRITTEN PERMISSION OF THE COMPANY. IT IS TO BE RETURNED TO THE COMPANY WHEN NO LONGER NEEDED.		DATE 7-16-81 DATE 7-1-80 DATE 7-1-80	





SECTION D-D
SCALE 1 / 2



SECTION C-C
SCALE 1 / 2

NOTES:

1. ALL MATERIAL SABS 1431 Gr.300W
2. ALL STEELWORK, WORKMANSHIP & FABRICATION TO BE IN ACCORDANCE WITH BS 449-1976.
3. ALL FLAME-CUT EDGES, BURRS & SHARP EDGES TO BE GROUND SMOOTH.
4. ALL HOLES TO BE DRILLED AS PER DRAWING FOR GR.8.8 BOLTS
5. ALL WELDS TO BE AS PER DRAWING USING E7018LH ELECTRODES (U.O.S.) & TO COMPLY WITH SABS 044-1963.

DRAWN	VusiMk	2007/07/06	FOI KOR		
DESIGNED			TITLE		
CHECKED			DRYER PINION SHAFT		
SECT. ENGR.					
ENG. MNGR.					
*****			SIZE	DWG NO	REV
			A1	DA-212-501-312-0002-02	0
			SCALE	SHEET 1 OF 1	